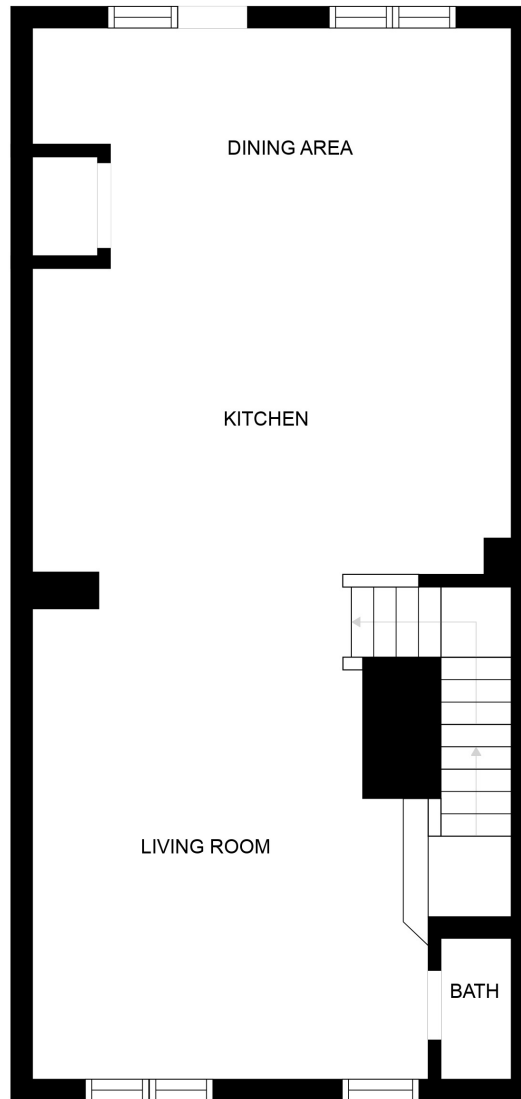
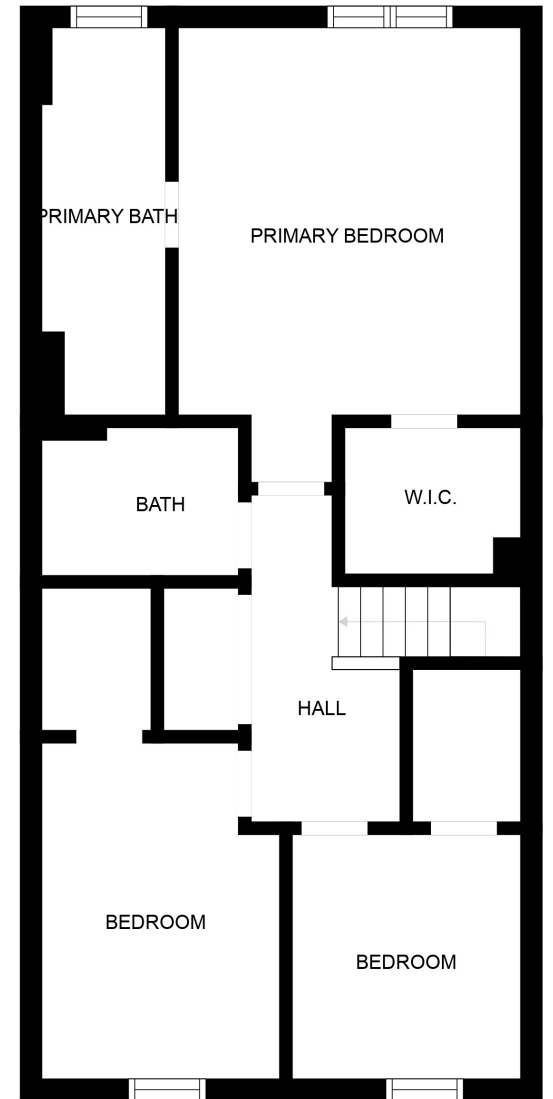


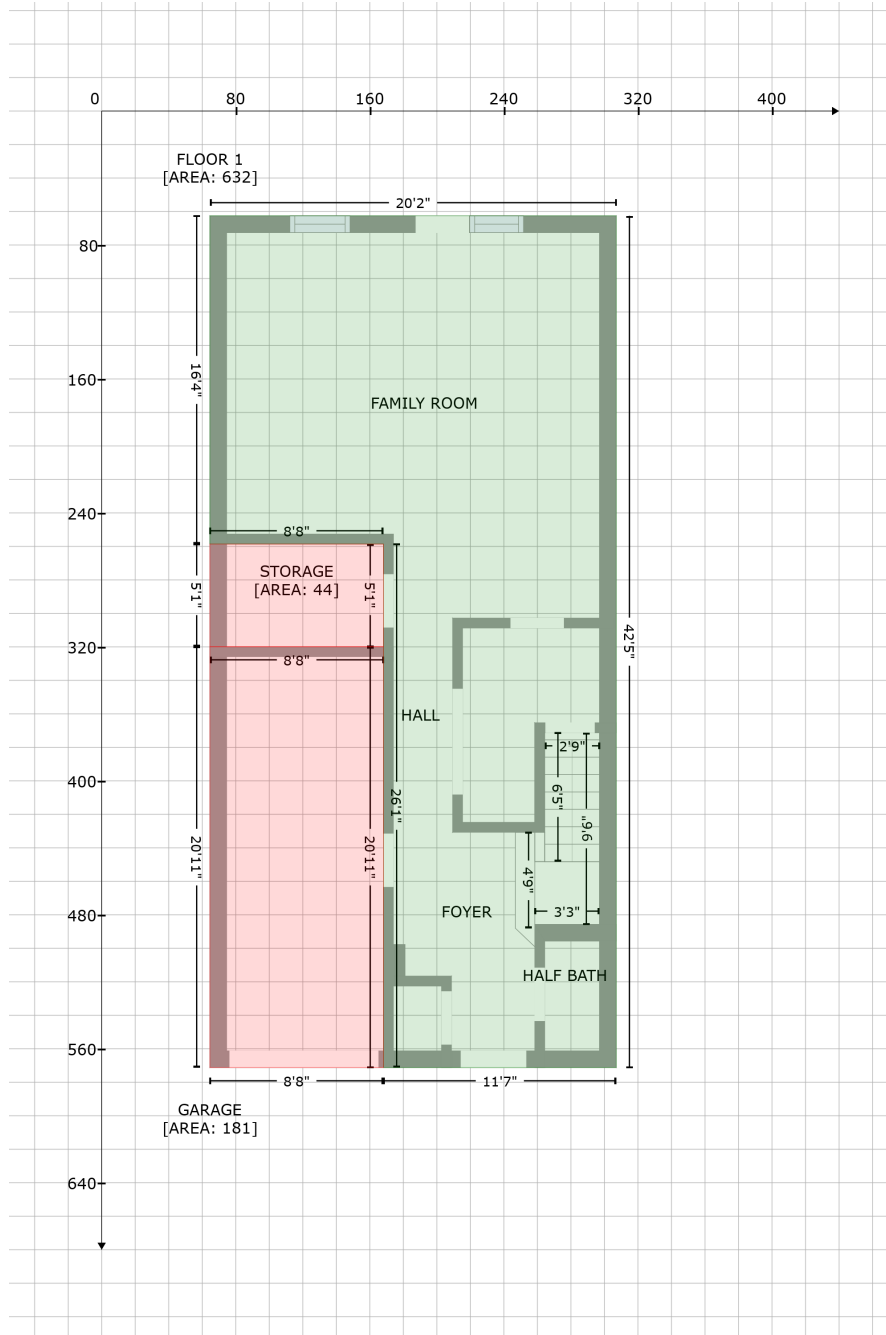
FLOOR 1



FLOOR 2

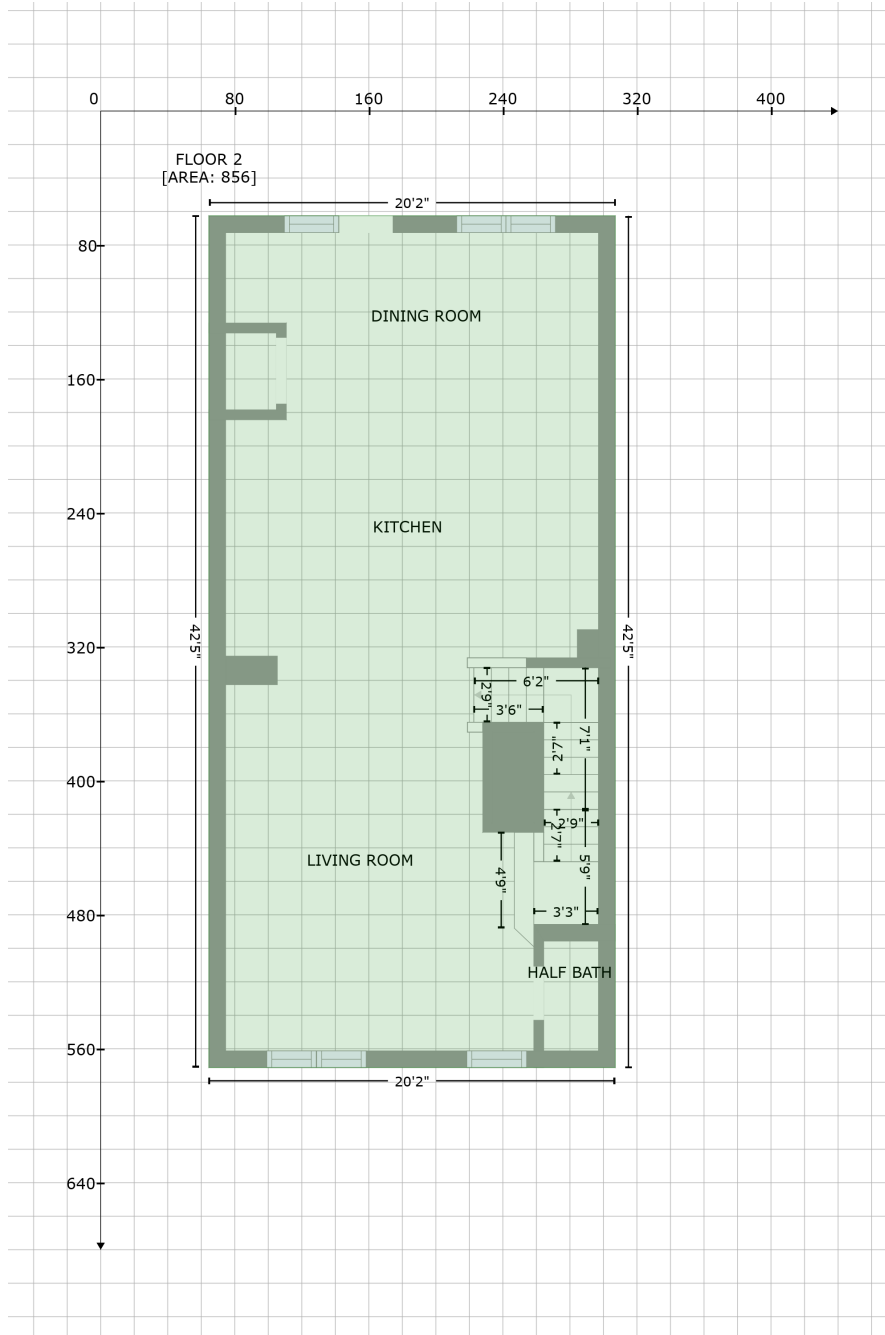


FLOOR 3

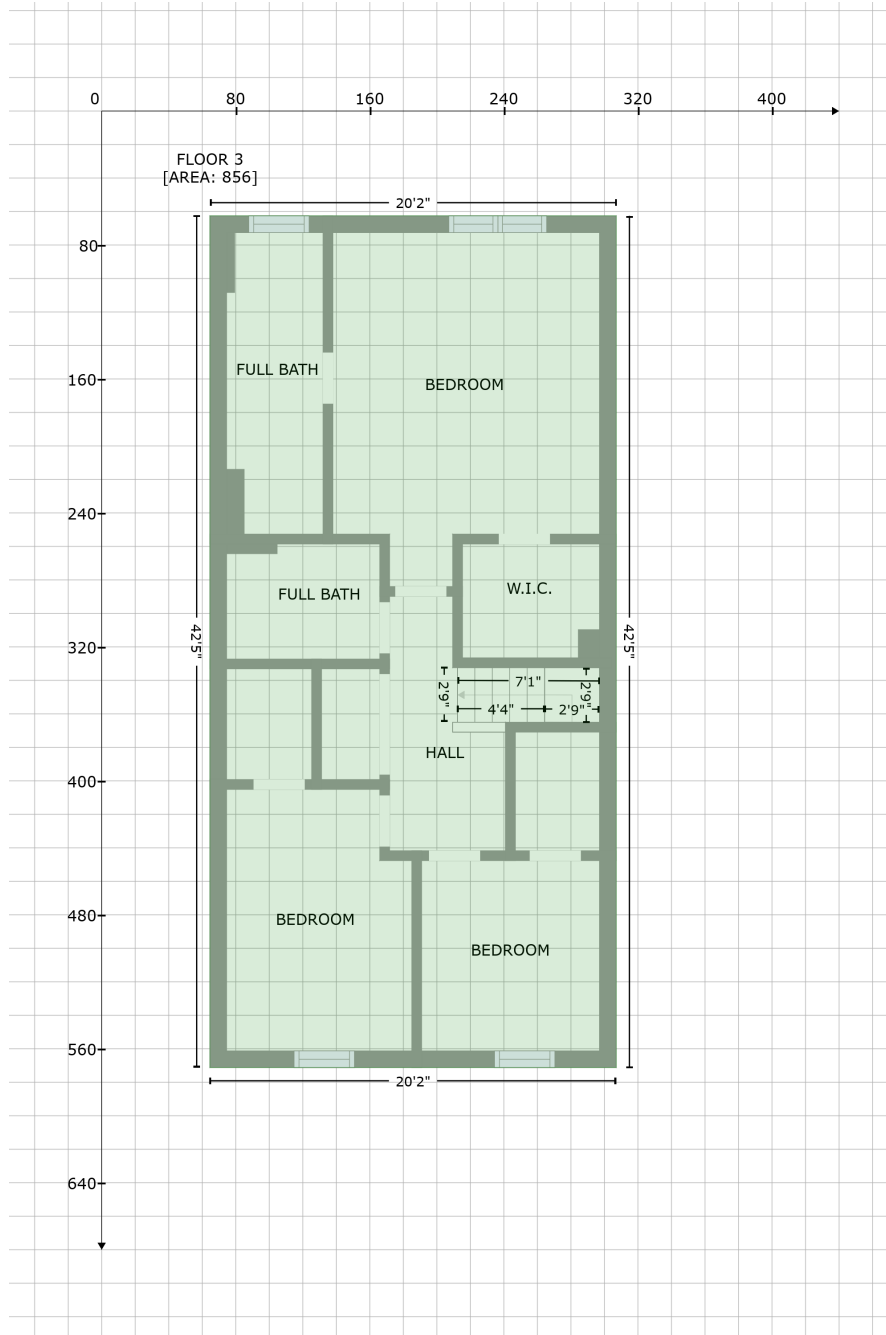


Space	Area (sq. ft)	Calculation <small>Coordinate Polygon Area Algorithm using inches</small>
FLOOR 1 (Living area)	632	$-\left((307 + 307) * (62.6 - 571.2) + (307 + 168.1) * (571.2 - 571.2) + (168.1 + 168.1) * (571.2 - 258.5) + (168.1 + 64.6) * (258.5 - 258.5) + (64.6 + 64.6) * (258.5 - 62.6) + (64.6 + 307) * (62.6 - 62.6)\right) * 0.5 * 0.00694$
GARAGE (Non-living area)	181	$-\left((168.1 + 168.1) * (319.9 - 571.2) + (168.1 + 64.6) * (571.2 - 571.2) + (64.6 + 64.6) * (571.2 - 319.9) + (64.6 + 168.1) * (319.9 - 319.9)\right) * 0.5 * 0.00694$
STORAGE	44	$-\left((168.1 + 168.1) * (258.5 - 319.9) + (168.1 + 64.6) * (319.9 - 319.9) + (64.6 + 64.6) * (319.9 - \right.$

Space	Area (sq. ft)	Calculation <small>Coordinate Polygon Area Algorithm using inches</small>
(Non-living area)		$258.5 + (64.6 + 168.1) * (258.5 - 258.5) * 0.5 * 0.00694$



Space	Area (sq. ft)	Calculation <small>Coordinate Polygon Area Algorithm using inches</small>
FLOOR 2 (Living area)	856	$-((307 + 307) * (62.6 - 571.2) + (307 + 64.6) * (571.2 - 571.2) + (64.6 + 64.6) * (571.2 - 62.6) + (64.6 + 307) * (62.6 - 62.6)) * 0.5 * 0.00694$



**Space**

**Area (sq. ft)**

**Calculation** Coordinate Polygon Area Algorithm using inches

FLOOR 3  
(Living area)

856

$$-((307 + 307) * (62.6 - 571.2) + (307 + 64.6) * (571.2 - 571.2) + (64.6 + 64.6) * (571.2 - 62.6) + (64.6 + 307) * (62.6 - 62.6)) * 0.5 * 0.00694$$